

# Installing a Flexi device



Your System Controller is pre-installed with the device software for your optical module hardware (Flexi camera). If you need to re-install the device software, following a new release of Video Gauge™ for example, this guide explains the steps to carry out the installation.

Published August 2022

## Step one – Connect your device installer USB

- |     |  |
|-----|--|
| 1.1 | The device USB flash drive is located inside the software installer case, which is included with your System (see image 1) |
| 1.2 | Connect the USB flash drive to the System Controller   |



Image one – software installer case

## Step two – Run the installer

- |     |  |
|-----|--|
| 2.1 | Navigate to the USB flash drive and locate the “Camera Setup.msi” file. This may be inside a folder called “Setup Files” (see image 2) |
| 2.2 | Double click this to run the installer and follow the on screen instructions   |

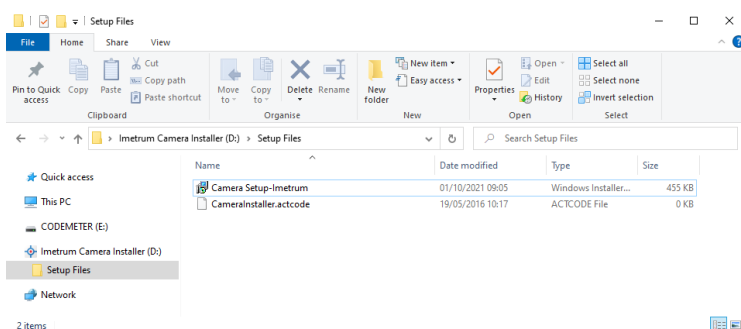


Image two – Camera Setup.msi file

## Step three – Add pixel size

- 3.1** In Video Gauge™, please confirm there's no watermark displayed in the video output window.
- In the Camera Configuration Tab, select the Manual Setup option, and configure the Pixel Size for the camera(s) being used with the system.
- With the camera connected, open Video Gauge™, navigate to Camera Calibration -> Choose the camera e.g. Camera 1 -> Manual Setup -> Sensor -> Enter pixel size -> Click OK (see image three)
- 3.2** Enter the pixel size for your camera based on the table in image four (example of pixel size added in image five)

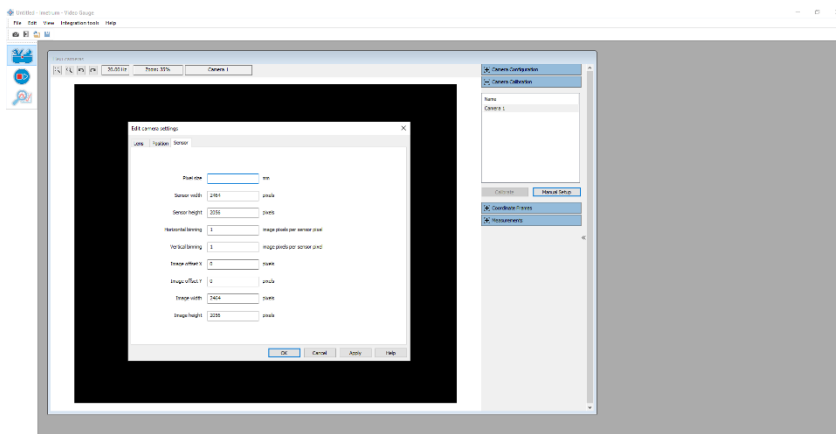


Image three – Camera pixel size screen

Camera	Pixel size in mm
IM-CAM-033	0.0069
IM-CAM-034	0.00345
IM-CAM-035	0.00345
IM-CAM-036	0.00345
IM-CAM-037	0.00586
IM-CAM-038	0.00345
IM-CAM-039	0.00345
IM-CAM-040	0.00345
IM-CAM-042	0.0048

Image four – Camera pixel size (mm)

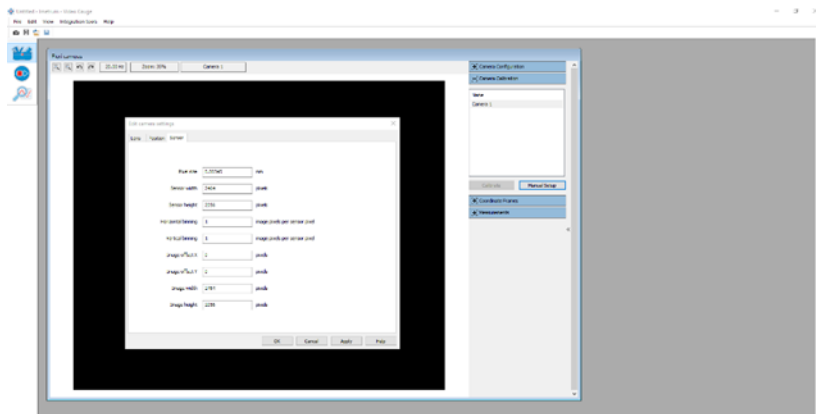


Image five – Camera pixel size screen example

If you have any issues, please contact your usual representative for further assistance.